

# Pet Waste Facts :::: Do Your Part

01

Just one gram of dog waste can contain as many as 23 million fecal coliform bacteria, including *E. coli*.

02

If left on the ground, pet waste can wash down storm drains, discharge into surface waters, and impair water quality.

03

Over 65 million dogs in the United States produce more than 9 million TONS of dog waste each year!

04

Hookworms, ringworms, tapeworms, and salmonella can be spread by contact with infected dog waste.

05

A high-protein, highly processed diet means dog waste can contain more bacteria and pathogens by weight than cow waste.



Your actions can help keep our water clean. Thank you for picking up after your pet!

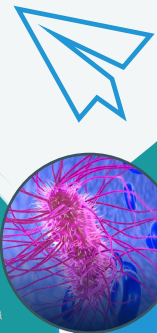


**GREATER LANSING  
REGIONAL COMMITTEE**  
FOR STORMWATER MANAGEMENT

# :::: POLLUTION ISN'T PRETTY.



## Pet Waste Management



For more information or to learn more about protecting our water, visit the link below or contact the Tri-County Regional Planning Commission.

mywatersheds.org  
mywatersheds@mitcrpc.org



**TRI-COUNTY**  
regional planning commission

mywatersheds.org

# What's the Problem with Pet Waste?

Pet waste isn't just a nuisance in yards and parks. It is full of bacteria that can make people and aquatic plants and animals sick. When left on the ground, precipitation and sprinkler runoff can wash pet waste (and the bacteria it carries) into storm drains. Since most storm sewers discharge into rivers, lakes, and streams without undergoing any treatment, runoff polluted with pet waste and other contaminants can impair our surface water resources.



# Help Keep Our Water Clean

There are many threats to the health of our watershed, but picking up after our pets is a simple and easy way to limit one common source of pollution.

- Frequently pick up pet waste from your yard or hire a pet waste removal company to clean it routinely.
- Pick up after your pets before watering your yard or cleaning patios and driveways. Never hose pet waste into the street or gutter.
- Carry a plastic or biodegradable bag when walking pets and be sure to pick up after them. Either throw the waste in the garbage, flush it, use a pet waste composter, or:
- Bury small quantities in your yard to decompose slowly. Dig a hole one foot deep, place three to four inches of waste at the bottom of the hole, and cover the waste with at least eight inches of soil. Bury the waste in several different locations in your yard. Just make sure to keep it away from vegetable gardens!



Dogs can't do this....

So please do this!

