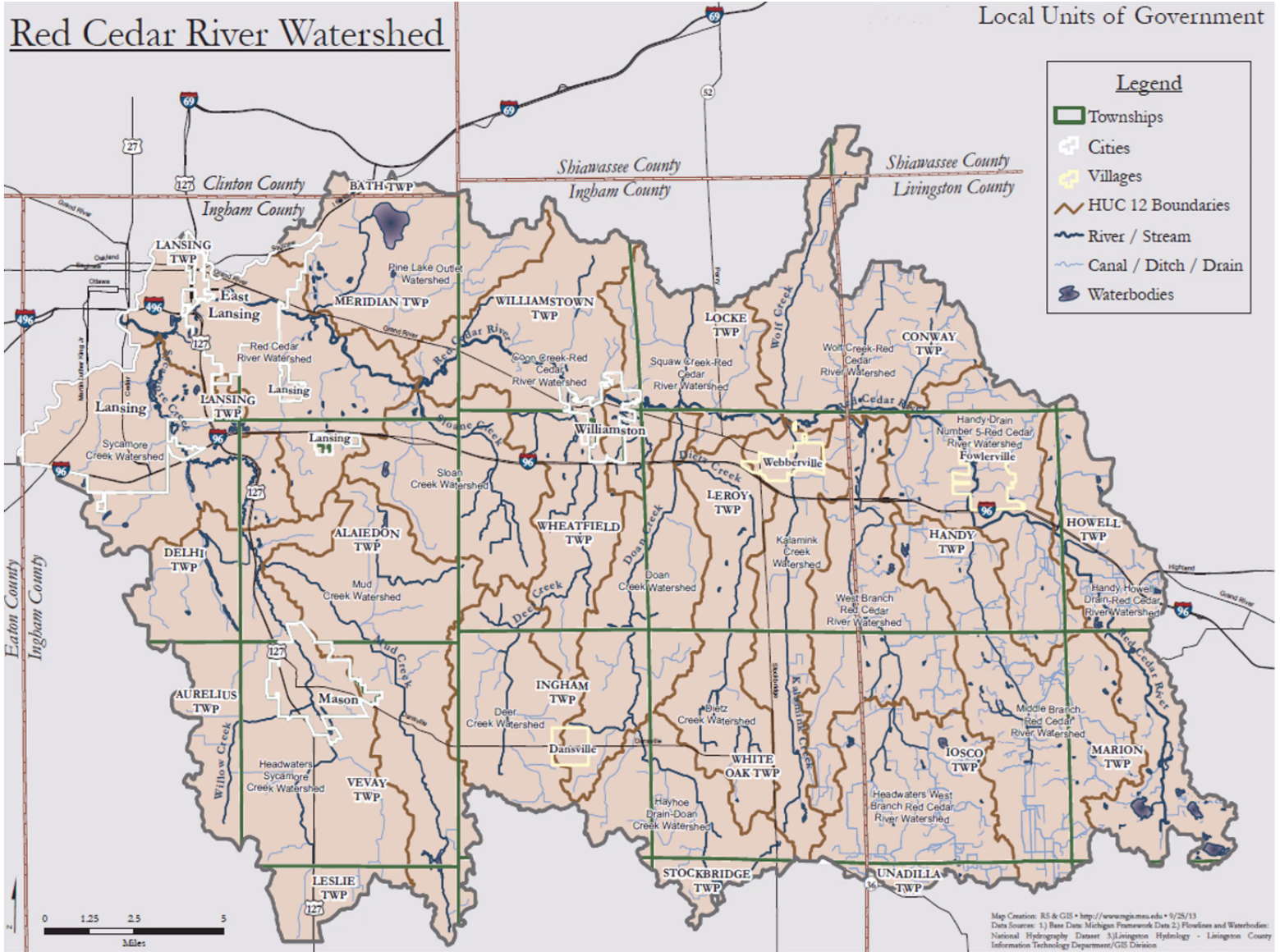


Understanding your local Watershed



What is a Watershed?

Above is a map of the Red Cedar Watershed, which includes the City of East Lansing and nearby cities and villages, as well as the streams, rivers and water bodies throughout the watershed.

1. How are the boundaries of a watershed determined (circle one)?

a. Political determinations (county lines, state lines, etc.)

b. The elevation of the surrounding area

c. The size of the river

2. Where does the water in the Red Cedar River flow?

3. What do you know about a neighboring watershed?

4. What are three ways that we pollute our watershed?

a. _____

b. _____

c. _____

5. What are three ways that we can protect our watershed?

a. _____

b. _____

c. _____